

# State of Wyoming Corner Record

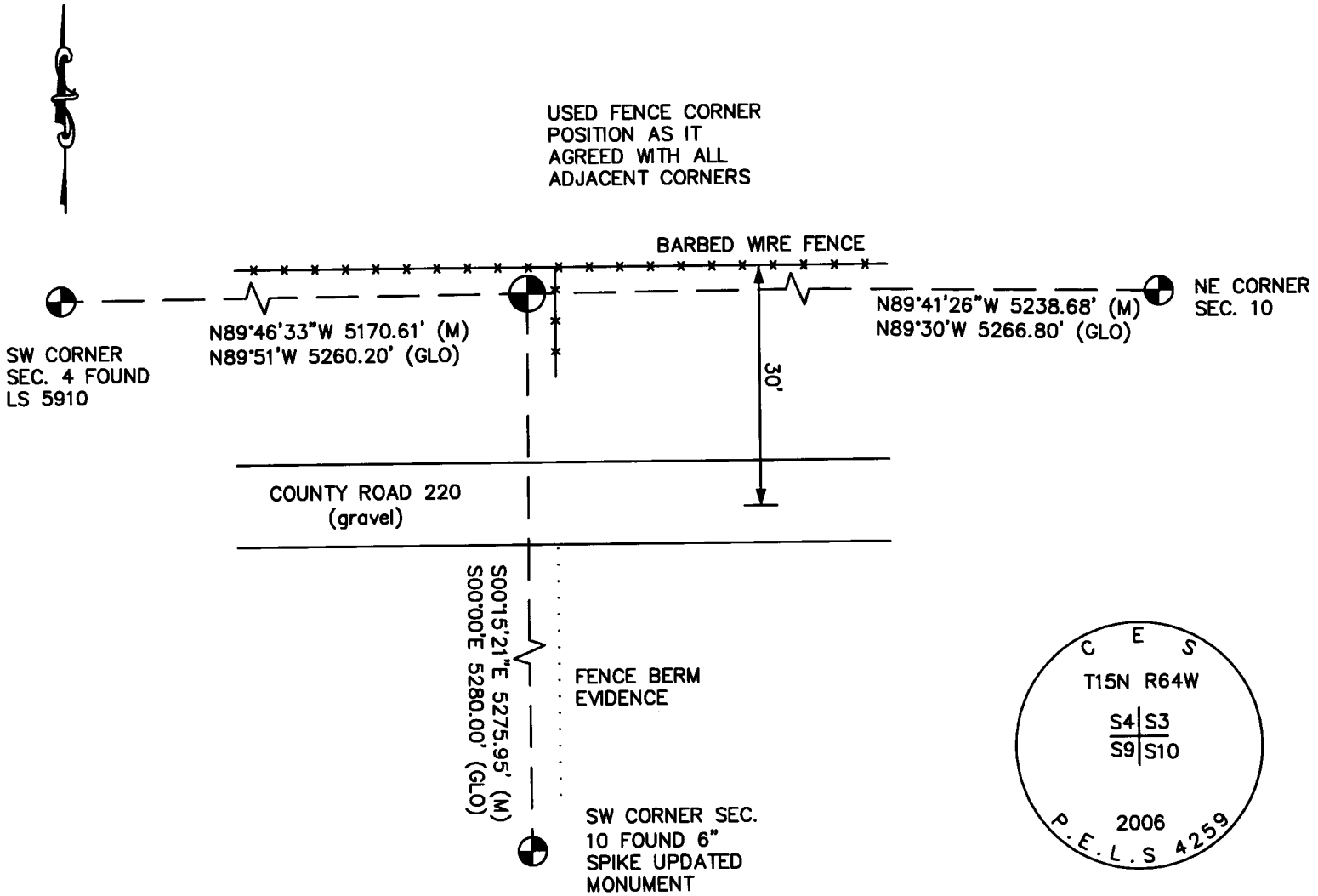
(In compliance with the *CORNER PERPETUATION AND FILING ACT*, Wyoming Statutes, 1977 Section 33-29-140, et. sq., and the Rules and Regulations of the Board of Professional Engineers and Professional Land Surveyors)

Reverse side of this form may be used if more space is needed.

Record of original survey and citation of source of historical information (if corner is lost or obliterated). Description of corner monumentation evidence found and/or monument and accessories established to perpetuate the location of this corner. Sketch of relative location of monument, accessories, and reference points with course and distance to adjacent corner(s) (if determined in this survey). Method and rationale for reestablishment of lost or obliterated corner.

DESCRIPTION: NORTHWEST CORNER SECTION 10, TOWNSHIP 15 NORTH, RANGE 64 WEST, 6TH P.M.  
 NO EVIDENCE OF ORIGINAL MONUMENT FOUND: REESTABLISHED BY USING APPARENT OCCUPATION LINES AND GLO RECORD.

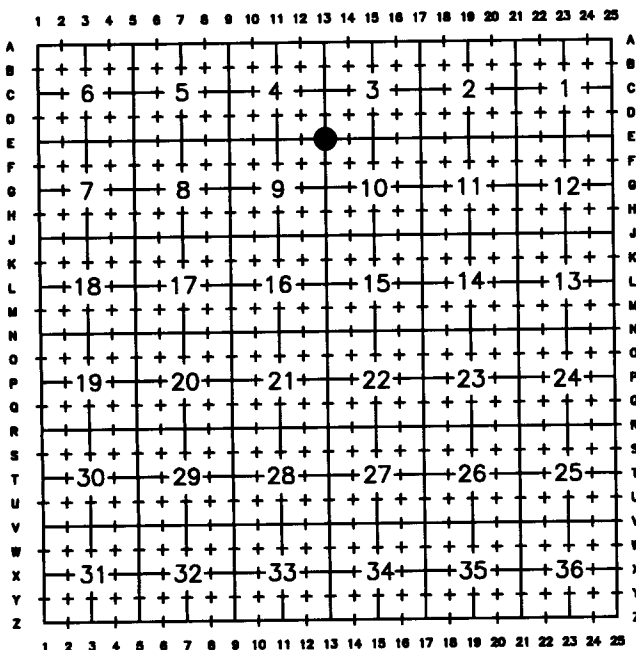
SET: SET #5 REBAR AND 3" ALUMINUM CAP



Date of Field Work: 06/09/06

Office Reference: 1213.00

## Cross Index Plat

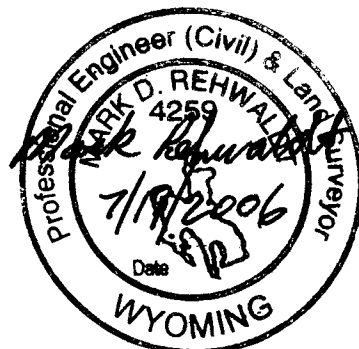


Firm/Agency, Address

COFFEY ENGINEERING & SURVEYING, L.L.C.  
 903 GRAND AVENUE  
 LARAMIE, WYOMING 82070  
 307.742.7425

This corner record was prepared by me or under my direction and supervision.

SEAL & SIGNATURE



RECORDED 8/09/2006 AT 12:11 PM REC# 454108 JK# 1963 PG# 1344  
 DEBRA K. LATHROP, CLERK OF LARAMIE COUNTY, WY PAGE 1 OF 1

Corner Name Northwest Corner Section 10, Township 15 North, Range 64 West, 6th P.M.  
 County: Laramie Wyoming

Cross-Index No.: E13